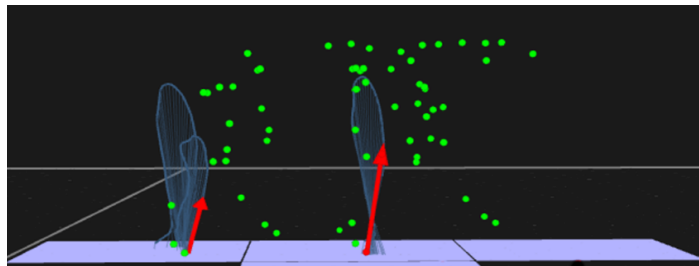


Do different breeds of dogs walk differently? Do mobility issues affect different breeds differently? Study participants needed!

What is this study about?

We are recruiting dogs to take part in a study that will help determine how body shape (of different breeds) affect the movement of your dog. With this knowledge, veterinarians can begin to understand how body shape and the way dogs walk and run might be related to specific disease and injury risks in certain breeds.



What does it involve?

Dogs will be asked to perform walking trials in our biomechanics lab at the university main campus in Liverpool. We will measure the motion of their joints using skin markers and cameras.

Who can take part?

We are looking to recruit from the following breeds that have been diagnosed **with a minor-moderate mobility issue (e.g. they can walk & trot but they may show some lameness)** that is likely to impact on the way they walk: **German Shepherds, Labradors, Cocker Spaniels, Springer Spaniels, Dachshunds, West Highland White Terriers, French Bulldogs, Border Collies, Beagles, Deerhounds, Great Danes, Parsons Russells and Yorkshire Terriers.** They need to be at least 1 year old but younger than 8 years old, currently going for walks of approximately 30 minutes a day or more. They should also be happy to be handled and do some basic tasks: standing still, and walking and trotting in a straight line.

If you are interested, or would like further information, please contact:
Karl Bates at k.t.bates@liverpool.ac.uk or 07792595055

****All participants will receive a £10 Amazon voucher per visit for taking part.****